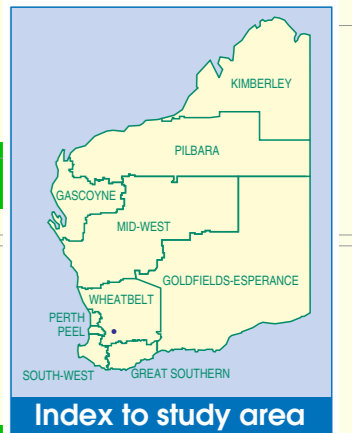
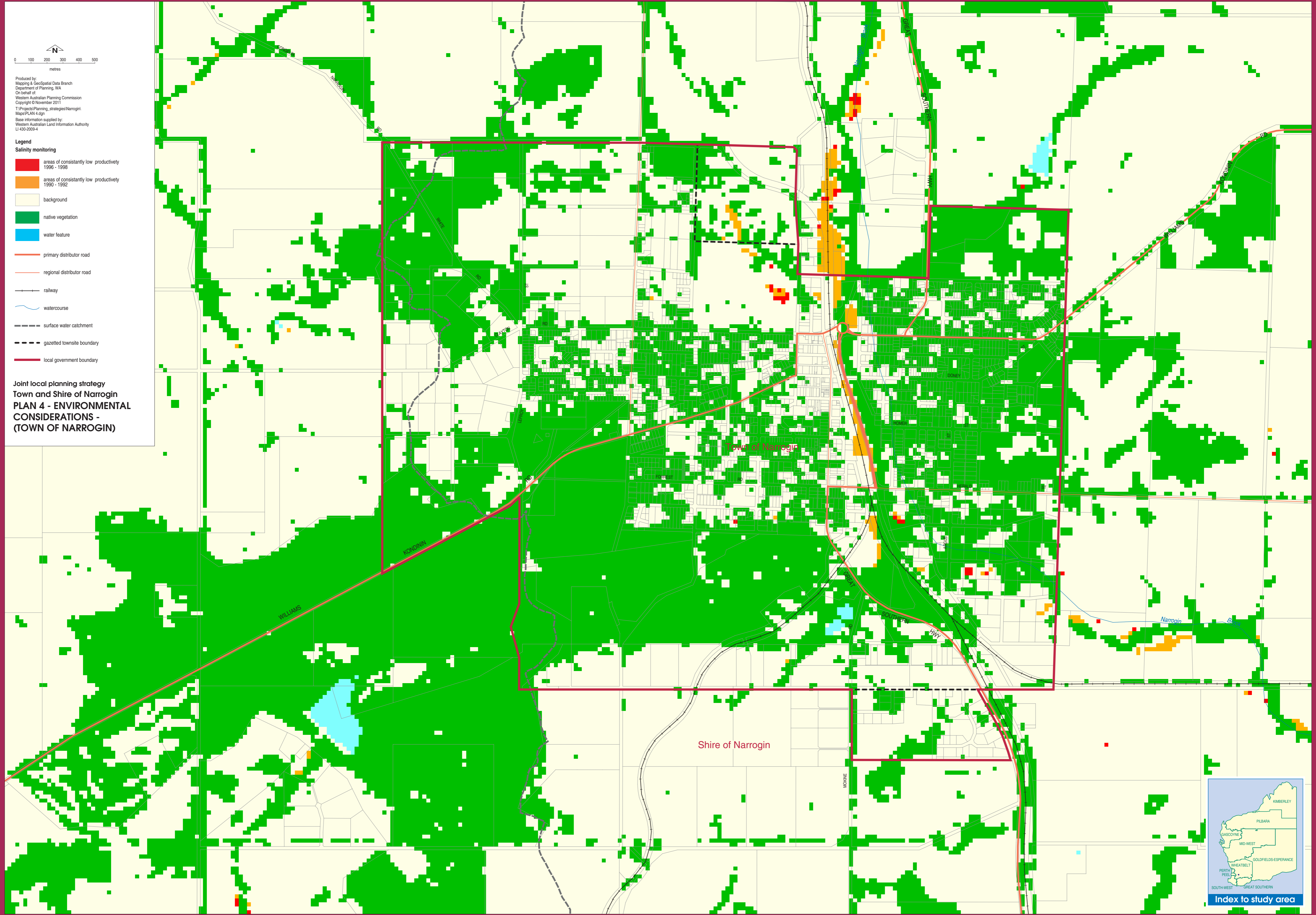


Produced by:
Mapping & Geospatial Data Branch
Department of Planning, WA
On behalf of:
Western Australian Planning Commission
Copyright © November 2011
T:\Projects\Planning_strategies\Narrogin\Map\PLAN 4.gpm
Base information supplied by:
Western Australian Land Information Authority
LI 430/2005-4

- Legend**
- Salinity monitoring**
- areas of consistently low productivity 1996 - 1998
 - areas of consistently low productivity 1990 - 1992
 - background
 - native vegetation
 - water feature
 - primary distributor road
 - regional distributor road
 - railway
 - watercourse
 - surface water catchment
 - gazetted townsite boundary
 - local government boundary

**Joint local planning strategy
Town and Shire of Narrogin
PLAN 4 - ENVIRONMENTAL
CONSIDERATIONS -
(TOWN OF NARROGIN)**



Index to study area