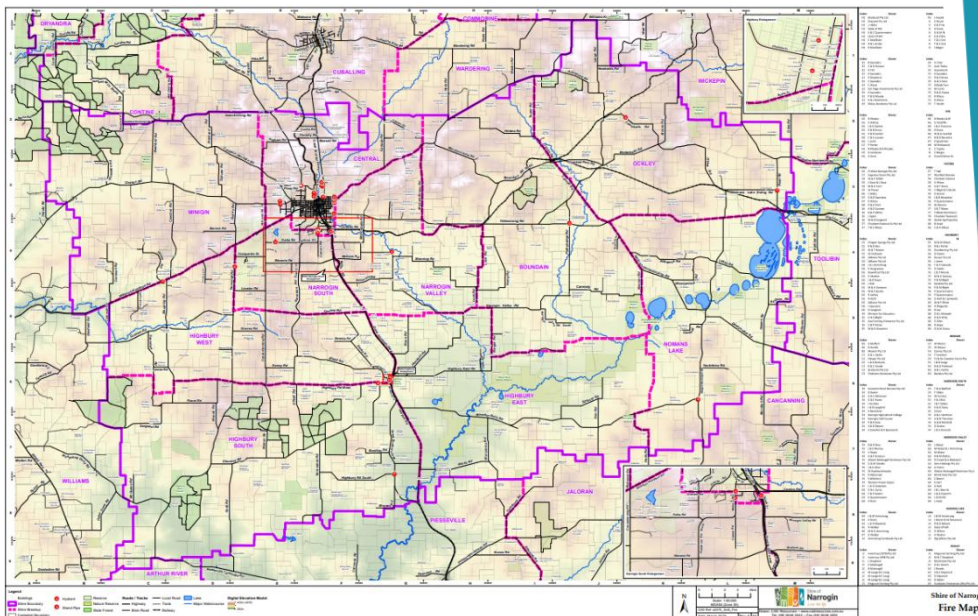


# TOWN PLANNING

We are happy to be retained on a fee for service basis or if you would prefer, a contract of 12 months if that provides you with some confidence and surety of level of service. The Shire of Narrogin employs two qualified Town Planners to enable confidence around continuity of service provision.



## Shire of Narrogin LG2LG Town Planning Services can provide:

- Assessment of all development applications in accordance with the Local Planning Scheme, Planning Acts and Legislations and local planning schemes under delegated authority;
- Assessment of all subdivision/amalgamation applications;
- Preparation and planning of agenda reports for Council's consideration;
- Planning advice to senior management in relation to the development and coordination of planning and development projects;
- Assessment and consideration of public submissions and neighbour comments and preparation of internal reports, recommendations or advice for external agencies;
- Assessment and preparation of reports to Council on Scheme amendments and planning policy;
- Responses to written and verbal enquiries made by external parties;
- Assessment of all major strategic development applications and structure planning proposal;
- Liaison with applicants and provide pre-lodgement advice; and
- Inspections, statutory and technical assessments and stakeholder consultation.

## Limitations & Exclusions:

- Shire of Narrogin personnel would need to be appropriately authorised to undertake relevant enforcement and regulatory services under your local government's Local Laws and various State Acts, however we can easily guide you through this process.

## SHIRE OF NARROGIN

89 Earl Street, Narrogin (PO Box 1145) WA 6312

or [enquiries@narrogin.wa.gov.au](mailto:enquiries@narrogin.wa.gov.au)

Tel: (08) 9890 0900

[www.narrogin.wa.gov.au](http://www.narrogin.wa.gov.au)

# LG<sub>2</sub>LG SERVICES

## Benefits

- Local knowledge
- Experienced & qualified officers
- Located within 90 minutes
- No on costs – monthly billing
- Long term rates available

## Fees & Charges

- Current fees and charges for all services can be found by visiting: <https://www.narrogin.wa.gov.au/live/services/fees-charges.aspx>
- All fees listed are inclusive of GST and are reviewed annually.
- Council maintains comprehensive Public Liability, Workers Compensation and Professional Indemnity Insurances.

## Clients

- Shire of Kent
- Shire of Lake Grace
- Shire of Narrogin
- Shire of Wickepin
- Shire of Wandering

## Further Information:

Executive Manager Planning & Sustainability

[emps@narrogin.wa.gov.au](mailto:emps@narrogin.wa.gov.au)