



NARROGIN BATTERY ENERGY STORAGE SYSTEM (BESS)

18 November 2025

 76 Narrogin Valley Road, Narrogin Valley, WA

 narrogin@southenergy.com.au

 narroginbess.com.au



WHO WE ARE

South Energy is an Australian renewable energy developer and has successfully developed seven utility scale solar projects with a combined capacity of **1GW** with planning and grid connection approval in Western Australia and Victoria.

South Energy is part of the Growland Group, a Melbourne based property developer with four high rise residential building projects and multiple housing estate developments. South Energy is in a strong financial position.

In the next five years, we aim to deliver **3 GW** of renewable energy projects with various technologies including wind, solar, battery energy storage and hydrogen.



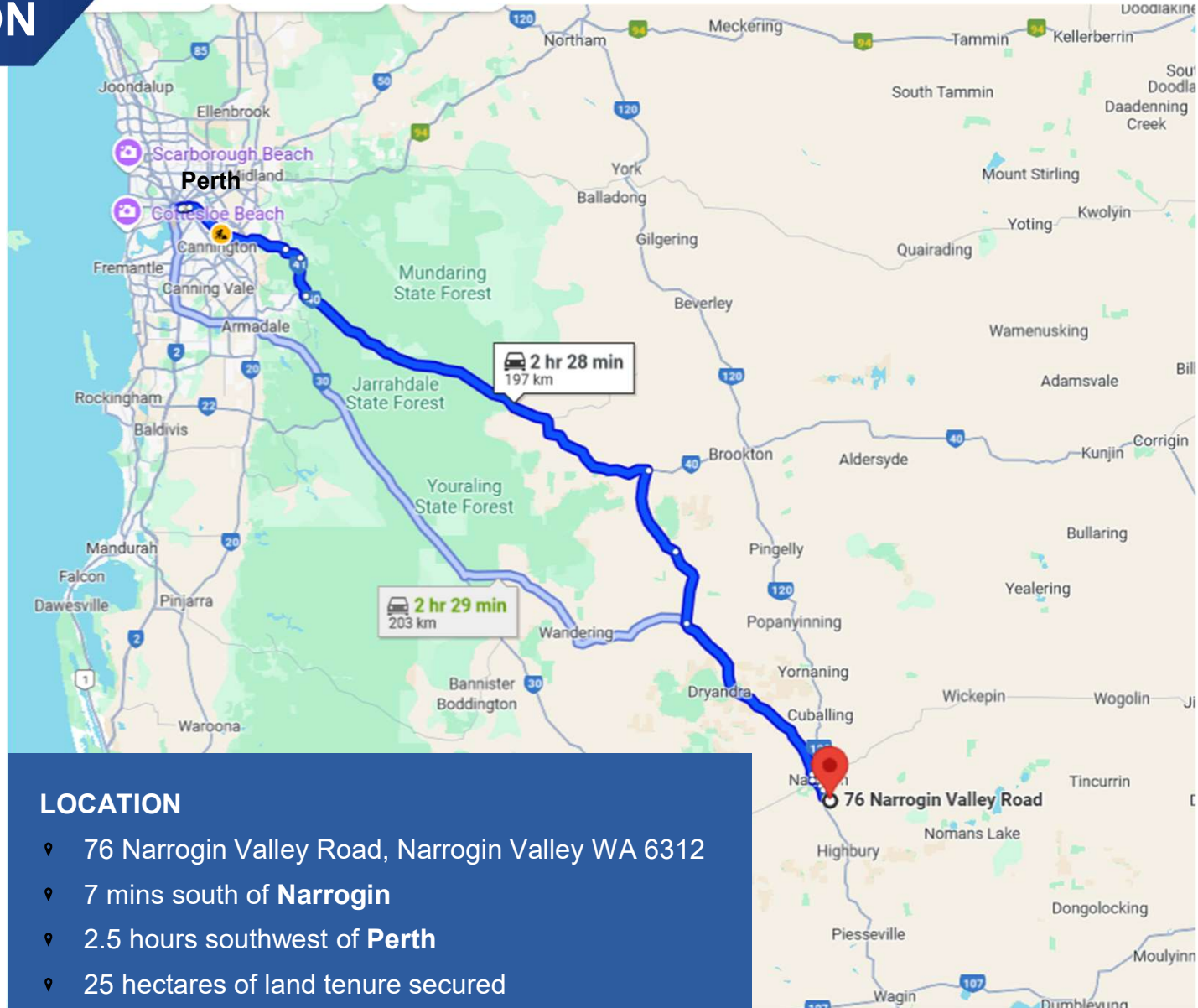
GROWLAND



South Energy



NARROGIN BESS LOCATION



LOCATION

- 📍 76 Narrogin Valley Road, Narrogin Valley WA 6312
- 📍 7 mins south of **Narrogin**
- 📍 2.5 hours southwest of **Perth**
- 📍 25 hectares of land tenure secured

NARROGIN BESS LOCATION

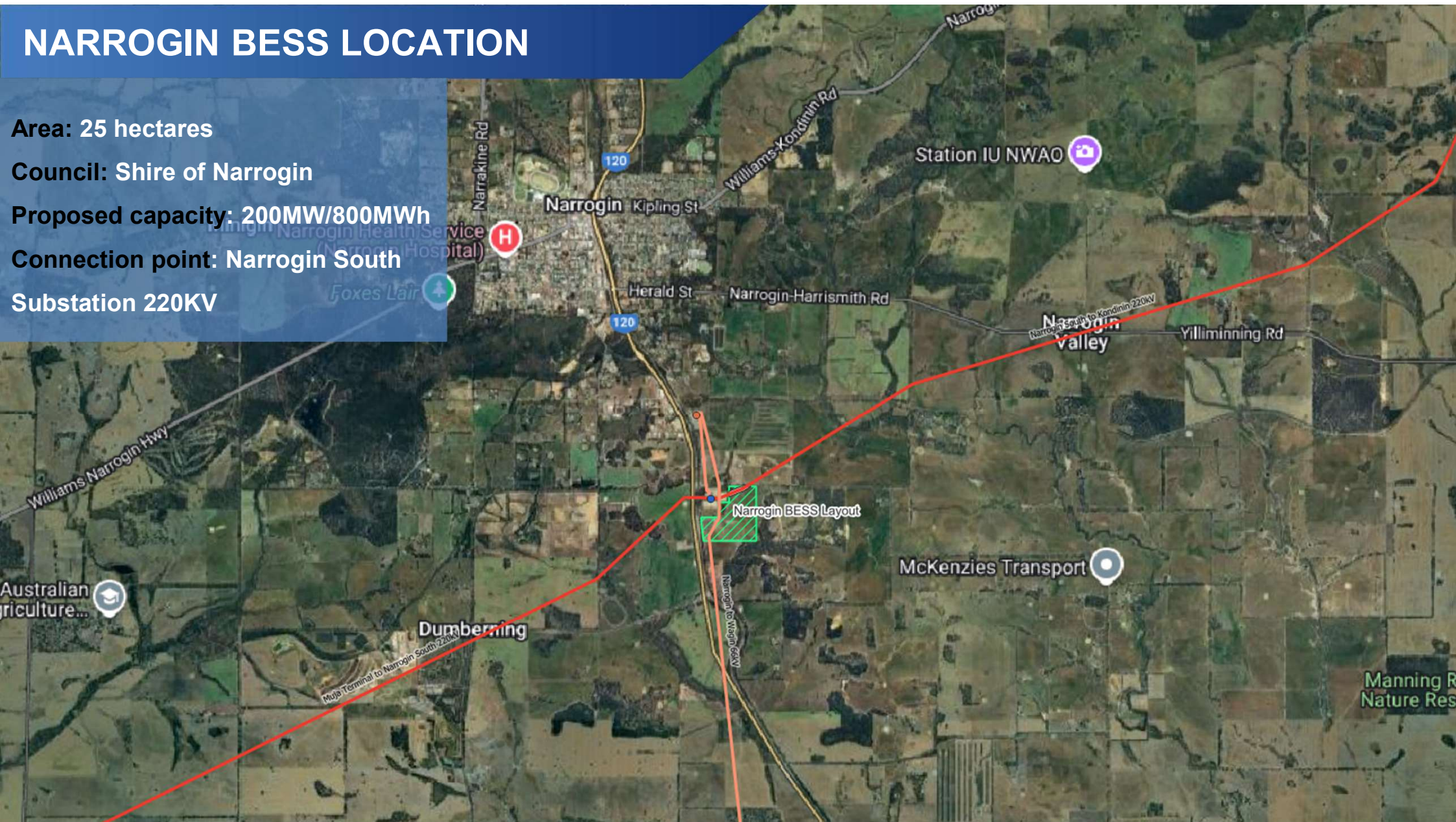
Area: 25 hectares

Council: Shire of Narrogin

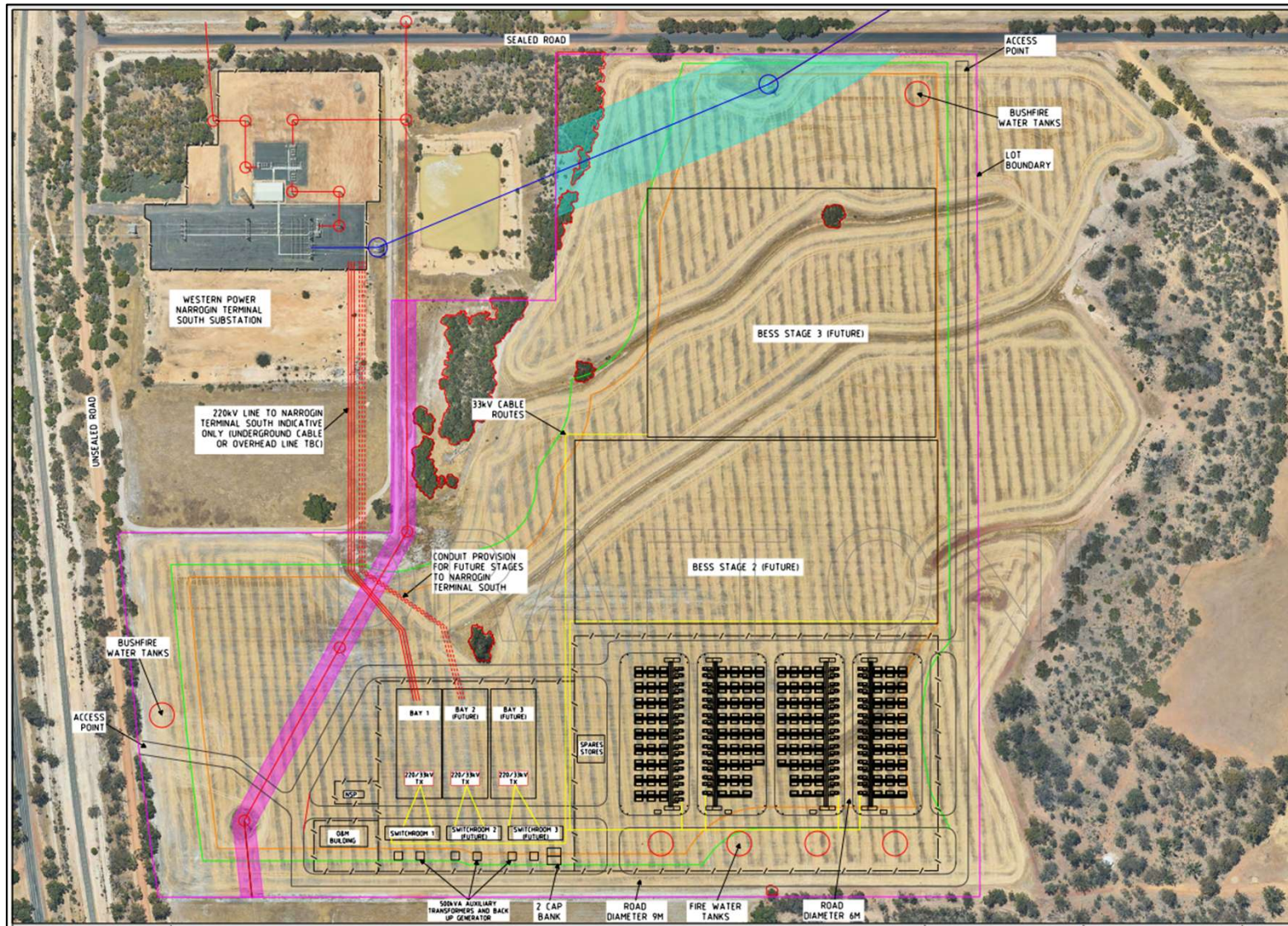
Proposed capacity: 200MW/800MWh





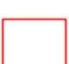



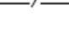




Connection point: Narrogin South

Substation 220KV



NARROGIN BESS LAYOUT



-  220kV OHL EASEMENT
-  66kV OHL EASEMENT
-  GREEN - 10kW/m² (1090K) ASSET PROTECTION ZONE BESS AND OTHER INFRASTRUCTURE
-  ORANGE - 10kW/m² (1200K) ASSET PROTECTION ZONE HABITABLE BUILDINGS
-  VEGETATION
-  66kV POLES
-  220kV POLES
-  SUBSTATION FENCE
-  EXISTING 66kV OVERHEAD LINE
-  EXISTING 220kV OVERHEAD LINE
-  LOT BOUNDARY
-  33kV CABLE ROUTES
-  220kV LINE



Source: GHD

VISUAL IMPACT SIMULATION - NORTHWEST



Artistic Impression #1:
Narrogin Townsite, Facing northwest

PROJECT TIMELINE

2024

- Q3-Q4 Grid Connection – Critical Project Framework (CPF) Submission
- Q4 DA Submission

2025

- Q1 Grid Connection – Maturity (CPF) Confirmed
- Q2 DA Approval
- Q3-Q4 Grid Connection – Project Communication with Service Provider

2026

- Q1-Q4 Grid Connection – Access Negotiation
- Q4 Financial Closure

2027

- Q1 Grid Connection – Connection Agreement Execution
- Q2 Construction Start

2028

- Q4 Commercial Operation Date



ABOUT SOUTH ENERGY

South Energy is an Australian developer of utility-scale renewable energy and has seven solar projects with a combined capacity of 1 GW in Western Australia and Victoria.

www.southenergy.com.au

DISCLAIMER

This document may be of assistance to you but South Energy and its employees do not guarantee that the document is without flaw of any kind or is wholly appropriate for your particular purposes and therefore disclaims all liability for any error, loss or other consequence which may arise from your relying on any information in this document.

© 2024 South Energy Pty Ltd