

How much will it cost?

The cost of services is based on your income and set in line with The Home and Community Care National Service Standards.

Your ability to pay will be assessed when you meet with the Client Services Officer.

If you cannot afford to pay, services can still be provided.

Where can I get more information?

CONTACT OUR OFFICE -

Manager/Client Services Officer:

Telephone: **08 9881 4455**

Fax: **08 9881 4695**

Address: Jessie House
30 Clayton Road
Narrogin 6312

Office Hours:

Monday - Friday: 8.30am - 4:30pm

Information is also available from:

The Narrogin Homecare Client Handbook
(ask for a copy)

- Your doctor
- The hospital
- The Town of Narrogin offices

Funded by:

- The HACC, Home and Community Care Programme, a joint Commonwealth and State/Territory Program.
- The Commonwealth Department of Health and Ageing CACP Program
- The Commonwealth Department of Veterans' Affairs

Under Funded by:

- Governed by The Town of Narrogin

Jessie House

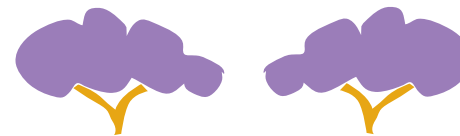
Phone: 08 9881 4455

30 Clayton Road,
Narrogin WA 6312

Fax: 08 9881 4695

homecarecoord@westnet.com.au

For people who are frail aged or have a disability, and their carers, who need additional support to enable them to live comfortably in their own homes.



Narrogin Homecare Information Brochure

- Home and Community Care Services
- Community Aged Care Packages
- Veterans' Homecare

love the life

For people who are frail aged or have a disability, and their carers, who need additional support to enable them to live comfortably in their own homes.

How can Narrogin Homecare help?

PERSONAL CARE

Helping you with daily self-care tasks (eg eating, bathing, grooming etc.) It may include medication monitoring.

RESPIRE (Relief for the Carer)

Respite can be arranged in your own home or in our Cottage. For Carers who require assistance.

DOMESTIC ASSISTANCE

Helping you with home care when families or carers cannot help (e.g. vacuuming, sweeping, washing laundry, ironing, shopping).

HOME MAINTENANCE

Help with jobs in the garden - lawn mowing, pruning, rubbish removal, wood chopping.

Minor repairs to your home. We may also help you to arrange for bigger jobs to be done by a tradesperson.

CENTRE BASED DAY CARE

Centre Based Day Care refers to assistance provided to the client to attend/participate in group activities at a location in Narrogin.

It includes group excursions/activities conducted by centre staff but held away from Narrogin.

TRANSPORT

We can help you get to medical appointments, shopping or visits if you cannot use the family car.

SOCIAL SUPPORT

Is normally provided in the home, but may include accompanying you on an excursion or trip. The support provided is individual and helps you participate in community activities. It includes keeping you company, taking you shopping, banking or to attend an appointment.

HOW TO OBTAIN HELP?

Anyone may seek our assistance including:

- individuals;
- relatives, friends;
- your doctor, hospitals;
- other community agencies.

CAN EVERYONE BE HELPED?

Every request is assessed individually. If we are unable to provide a service to you, we will suggest other agencies that may be able to help.



love the life